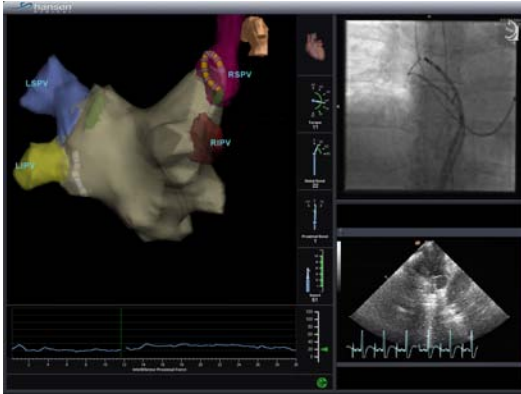


CoHesion™

3D Visualization Module



Presenting the CoHesion™ 3D Visualization Module.



CoHesion™ 3D Visualization Module

3D Catheter Control Meets 3D Visualization

Combining Hansen Medical's Sensei™ and St. Jude Medical's EnSite® technologies is designed to provide physicians with 3D visualization to augment their ability to move a catheter throughout the heart, as well as increase control over placement of the catheter in specific locations. Early clinical data and physician feedback have indicated a reduction in fluoroscopy time during a procedure and an increase in physician confidence in catheter placement and navigation.*

Key Features Include:

- Importation of the EnSite 3D geometry, labels and anatomical markers into the Sensei System's main navigation window.
- Localization of the percutaneous catheter tip within the EnSite 3D geometry.
- Instinctive navigation of the localized catheter tip by the Artisan™ Control Catheter.

The Sensei Robotic Catheter System transformed the world of catheter control. Now the CoHesion 3D Visualization Module adds a new dimension of confidence and accuracy.

*Data on file.

For further information regarding the CoHesion 3D Visualization Module, please contact Hansen Medical's customer service department at 1 888 404 5801 or 650 404 5800.



SPECIFICATIONS

CoHesion Minimum Hardware and Software Requirements

Sensei System	
Hardware	2.0
Software	2.2.1
EnSite System	
Hardware	DWS3 (Twin Dual Core Workstation)
Software	8.0

In the United States, the safety and effectiveness of the Sensei Robotic Catheter System for use with cardiac ablation catheters in the treatment of cardiac arrhythmias, including atrial fibrillation, have not been established.

Corporate Headquarters: 800 East Middlefield Road | Mountain View, CA 94043 | PH: 650 404 5800 | FAX: 650 404 5901 | www.hansenmedical.com
European Subsidiary: Hansen Medical UK, Ltd. | Boston House Business Centre | 69-75 Boston Manor Road | Brentford | Middlesex TW8 9JJ UK
PH: +44 208 847 8608 | FAX: +44 208 847 8669

© 2008 Hansen Medical, Inc. All rights reserved. LT0003 091508

"Artisan", "CoHesion", and "Sensei" are trademarks of Hansen Medical, Inc. and "Hansen Medical" and "Hansen Medical with heart logo" are registered trademarks of Hansen Medical, Inc., in the United States and other countries.